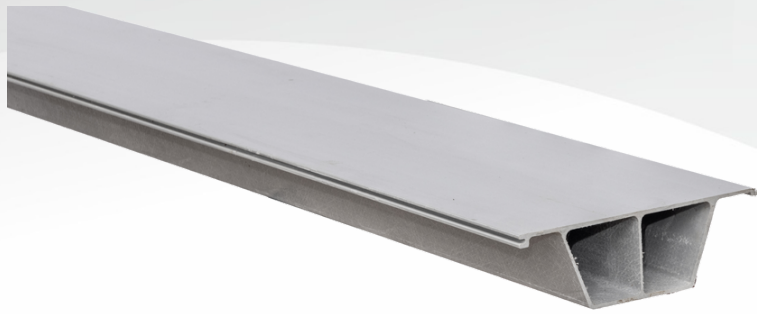


## PRODUCT GUIDE



### SuperPost\_100C

A retaining wall 'SuperPost\_100C' refers to a type of post specifically designed for use in SuperSleeper retaining wall systems. Made of composite materials, and they have a distinctive C-shaped profile. 'SuperPost\_100C' are installed vertically into the ground typically used for corners, change of directions or end posts. They serve as the primary structural support for the wall, helping to stabilize the retaining wall sleepers and prevent soil erosion or collapse.

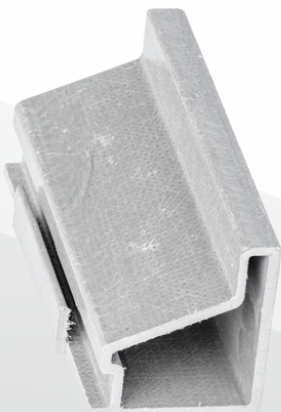
*SuperPost\_100C\_2.4 - SuperPost\_FRP C Post 100\* 50\* 6\* 2400mm W5.455kg*



### SuperBracket

A retaining wall 'SuperBracket' is a specialised bracket designed to attach a fence directly to a retaining wall. Made of composite materials and is designed to provide a secure and stable connection between the fence and the retaining wall posts.

*SuperBracket\_Fence Bracket - SuperBracket\_90\* 6\* 610mm W0.642kg*

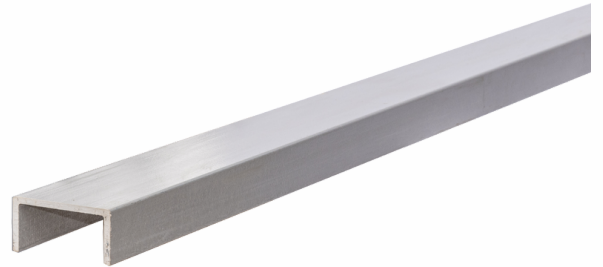


### SuperSleeper

A retaining wall 'SuperSleeper' is a horizontal support beam, made of composite materials. SuperSleepers are used as the primary support of the wall structure. They can also be used in garden beds, pathways, and other landscaping features.

*SuperSleeper\_1.95 - SuperSleeper\_FRP Sleeper 60\* 205-1950mm W4.627kg*

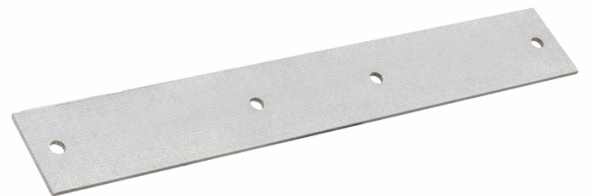
*SuperSleeper\_2.35 - SuperSleeper\_FRP Sleeper 60\* 205\* 2350mm W5.55kg*



### SuperPost\_120H

A retaining wall 'SuperPost\_120H' refers to a type of post specifically designed for use in SuperSleeper retaining wall systems. Made of composite materials, and they have a distinctive H-shaped profile. 'SuperPost\_120H' are installed vertically into the ground typically used for intermediate posts, for walls up to 1000mm in height. They serve as the primary structural support for the wall, helping to stabilize the retaining wall sleepers and prevent soil erosion or collapse.

*SuperPost\_120H\_2.4 - SuperPost\_FRP C Post 100\* 120\* 5\* 4\* 2400mm W5.9kg*



### SuperSupport

A 'SuperSupport' is a component used in the construction of SuperSleeper retaining walls to provide foundational support and stability to the bottom sleeper. It is made from composite materials and serves as the foundation upon which the wall is built. The 'SuperSupport' helps to distribute the vertical weight of the retaining wall evenly and prevents settling or shifting of the wall over time. Additionally, 'SuperSupport' can be used for providing further stability to the SuperCap when installed atop of top sleeper during retaining wall construction.

*SuperSupport - SuperSupport\_89\* 83\* 250mm*



### SuperCap

A retaining wall 'SuperCap' is placed atop a retaining wall for protection, and aesthetics. Made from composite materials and it shields the wall from weathering, whilst enhancing the walls appearance.

*SuperCap\_2.03 - SuperCap\_FRP Channel Cap*  
125\* 25\* 25.5\* 2030mm W1.729

*SuperCap\_2.425 - SuperCap\_FRP Channel Cap*  
125\* 25\* 2.5\* 2425mm W2.063



### SuperWedge

A 'SuperWedge' is a specialised component used in retaining wall construction. It is made of durable plastic and is designed to securely hold the SuperSleeper in place during installation. The 'SuperWedge' shape allows for easy insertion and adjustment, ensuring a tight fit between the SuperSleeper and SuperPost.

*SuperWedge - SuperWedge\_Plastic W0.016kg*



### SuperPost\_180H

A retaining wall 'SuperSleeper' is a horizontal support beam, made of composite materials. SuperSleepers are used as the primary support of the wall structure. They can also be used in garden beds, pathways, and other landscaping features.

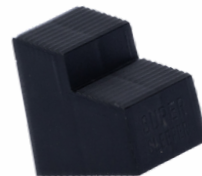
*SuperPost\_180H\_3.2 - SuperPost\_FRP H Post*  
180\* 100\* 7\* 6.5\* 3200mm W17.1kg



### SuperPlinth

A 'SuperPlinth' is a component installed at the base of a fence, particularly in situations where the fence needs to be raised or elevated. Made from composite materials it serves multiple purposes such as providing stability to the fence, preventing soil erosion, and enhancing the overall appearance of the fence line.

*SuperPlinth\_2.38 - SuperPlinth 185\* 40\* 2.5\* 2380mm W6.106kg*  
*SuperPlinth\_3.16 - SuperPlinth 185\* 40\* 2.5\* 3160mm W8.19.*



### SuperDrain

'SuperDrain' is a drainage cell/drainage mat, it is a type of product used in the construction of retaining walls to manage water drainage. 'SuperDrain' consists of a series of interconnected dimples that create channels for water to flow through. The drainage cell is installed behind the retaining wall structure and serves to collect and redirect water away from the wall, preventing hydrostatic pressure buildup and potential wall failure..

*SuperDrain - SuperDrain\_(10mm) 0.9m\*15m*